

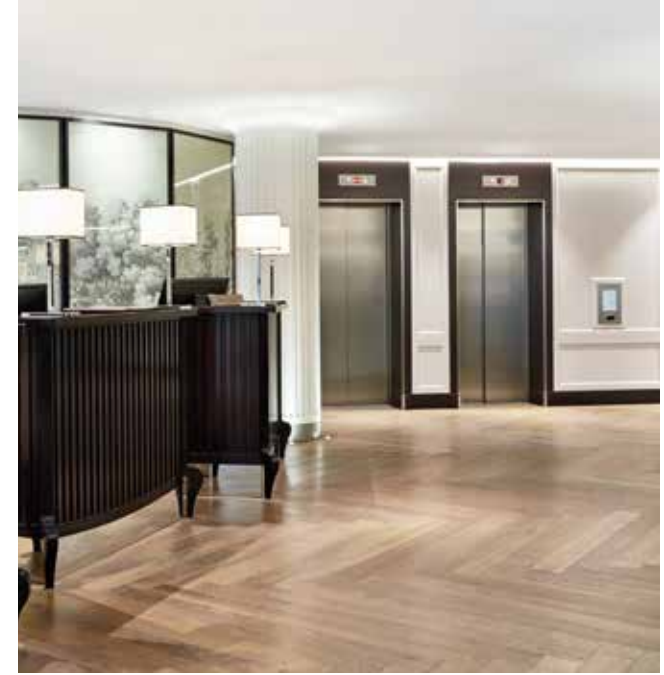


**SCHOTTEN & HANSEN | SOFITEL FRANKFURT OPERA, FRANKFURT/MAIN**  
**Wooden Flooring in the Hospitality sector: Timeless aesthetic und durability**

**Schotten  
&Hansen**

**HOSPITALITY**





In a successfully designed Hotel, guests of everyday life find themselves in an oasis of peace and relaxation surrounded by interiors of creative ideas. The interior design whether consciously or unconsciously perceived, has a significant influence over one's stay. The often-overlooked basis is built by the flooring provided. But what requirements and stresses does it have to withstand in addition to the tracks of rolling suitcases, pebbles and spilled coffee?

An example:

The **Sofitel Frankfurt Opera** is a five-star Hotel in a premium location with a view of the 'Alte Oper' in an elegant city combining luxury and timeless elegance. A building in which art, design and architecture build a homogenous relationship. Like

every Sofitel, the building in Frankfurt is inspired by regional culture and tradition.

The interior of the luxury hotel bears the signature of the French interior designer Nicolas Adnet and his Paris studio MHNA. For the Sofitel Frankfurt Opera he was inspired by the French *Hôtel Particulier*. In the 17th and 18th centuries, these were large private townhouses in which the art of living was the result of comfort, service and art, culture and gastronomy. Adnet reinterprets the concept into France in the middle of the 20th century – and thus into a heyday of the classical and elegant style of living. The architectural structure of the Sofitel Frankfurt Opera follows the historical design principle and makes playful borrowings from his Parisian role model: Above the lobby, the mezzanine, a gallery-like interme-

diante floor, opens up. The floors with the guest rooms and suites extend above as in a residential building.

The time travel begins in the reception area, the lobby. Arriving travellers already get the impression in the comfortable lobby that they are guests of a private house rather than checking into a hotel. Of course, only wooden floor is suitable for this positive first impression in compatibility between the luxury of the past and the present.

**But does a wooden floor also withstand daily stresses and economic demands of a modern hotel?**



## Timeless aesthetics fits into the design concept

In the lobby, the corridors, the restaurant and meeting rooms there are a total of over eight hundred square metres of floorboards from the Bavarian workshop Schotten & Hansen. Due to its elaborate processing and robustness, the wooden surface is ideal for rooms with high loads.

The installation of the traditional **herringbone pattern**, known from castles and museums, lends the reception hall a princely atmosphere. The serrated course is particularly effective on large surfaces, even with larger formats. At the same time it offers a discreet background for the international art collection of historical paintings from the 16th century, contemporary graffiti, curious sculptures and modern photographic works personally compiled by Nicolas Adnet.

In the meeting rooms, functionality meets exquisite style: brocade wallpapers from Hermès and small art objects are just two of many details that make the contemporary, elegant event rooms the right backdrop for private parties and occasions. Here, too, the Schotten & Hansen floorboards, laid in a wild pattern, are in excellent subordination.

With the colour smoke, the floor fits perfectly into the overall design concept. A natural colour that is produced in numerous steps until it matches the designer's wishes. The wood's own ingredients are activated and the finest pigments, extracted from earth and stone, are incorporated into the wood. These elaborate recipes and a specially developed surface refinement make it possible to give the floor its original aura back even when laid and after heavy use.



For a princely appearance, Schotten & Hansen floorboards are available in the lobby and in the restaurant in the traditional and tested Herringbone pattern.

Exact product description: Object plank, fine character grade, surface treatment brushed, smoke colour. In addition, four fidboxes were installed. Over the period of use, they enable radio evaluation of temperature and relative humidity.

In the Schönemann restaurant, too, the **oak planks in the Schotten & Hansen colour Smoke** provide a calm basis for the elegant interior with its slightly broken shades and high-quality opulent fabrics of different textures. Since Schotten & Hansen precisely adapts the wood to each project by hand, precisely **fitted connections and circular friezes** around the columns in the restaurant and lobby allow a seamless transition to other materials.

With the help of a special regeneration process, stains and scratches are removed without sanding, the colour tone is refreshed and refinished and the surface protected with a polish.



## Resilience through technical details

The floorboard used in the hotel consists of three-layered engineered wood layers, which are permanently glued together. In contrast to solid timber floors, the associated shrinkage and formation of joints is minimised with engineered floorboards. The visible top layer (3.5 mm) consists of high-quality oak with decorative small knots and cracks. The middle layer and back layer are made of fast-growing local coniferous wood. This **multi-layer construction** conserves resources and ensures **dimensional stability**.

In order to achieve a homogenous and **long-term appearance** in the timber grain, the wood is washed clean and pores are purified using a particularly developed technology. Essential ingredients which are responsible for stain sensitivity and yellowing and which could have a negative effect on the appearance of the wood are thus reduced. The colour remains demonstrably more stable.



The herringbone pattern is laid from the lobby into the corridors with plank flooring continuing into the elevators. Perfect connections thanks to precise craftsmanship: round friezes as a border around the columns (with recessed spots) in the lobby and restaurant as well as in the entrance area.





A Schotten & Hansen floor also withstands the daily challenges in the gastronomic sector. The initial additional investment pays for itself with a suitable service and maintenance concept after only a few years.



## Consistency through individual service concept

Scuff marks of suitcases and shoes, scratches caused by dirt or small stones along with moisture and salt cause a considerable impact on the floor over time. With optimum care, however, the Schotten & Hansen surface retains its **aesthetics and durability over the long term**. The result is a homogeneous patina that builds and is preserved over the years since the surface can be re-finished and never requires to be sanded.

The basis for this is a **natural protection made of resins, waxes and oils** developed in the in-house laboratory for the manufactured products. This also creates a healthy living atmosphere. The wood can breathe, absorb moisture and release it again. In other hotel projects the enduring finish is key reason to use Schotten & Hansen floorboards in spa and wellness zones. The surface remains open to diffusion and helps to regulate the room climate.

From the outset, the housekeeping

team of Sofitel Frankfurt Opera was supported by Schotten & Hansen regarding the **ongoing maintenance of the floors**. Should the surface be seriously damaged by stains or mechanical damage, it can be **regenerated and rebuilt by the Schotten & Hansen service team**. Completely without sanding and the associated noise and dust.

A service visit takes place while the hotel is in operation. For example, stains are removed and mechanical damage is repaired, the colour tone is refreshed if necessary and the surface is finally protected with a polish.

The extraordinary look and feel of the surface is permanently retained.





A wooden floor also creates a quiet, homogeneous atmosphere in the conference rooms.

## Result:

The „Haute Hôtellerie“ like the Haute Couture stands for a result beyond one hundred percent: The **five-star superior Sofitel Hotel Frankfurt** presents itself at this high level in the heart of Frankfurt am Main. Nicolas Adnet was responsible for the interior design, who has his creative roots in Haute Couture. With aesthetic skill he arranges a wide range of fabrics, colours and shapes. With a lot of love for detail he adds patterns and textures together to finely tuned harmonies and creates hand-picked individual pieces of balanced spatial compositions and contemporary elegance.

A total of over eight hundred square metres of Schotten&Hansen oak floorboards in smoke colour blend perfectly into the design concept. They are extremely hard-wearing and easy to clean. Layed in the traditional herringbone pattern, the floor in the reception hall creates a homely atmosphere. Precisely fitted connections provide for a seamless transition to other materials and room constructions. Thanks to their elaborate workmanship and technical details, the floorboards can withstand the enormous stresses of a modern hotel in a major German city. The advantages of an engineered floorboard as well as the natural and robust surface treatment produces permanently the highest quality. Advice and support individually tailored to the

Sofitel for the care and maintenance of wooden surfaces provides the floor with permanent protection. A Schotten&Hansen floor thus considerably **exceeds the conventional life cycles of conventional products**.

As an urban counterpart to the rural manor house, the Frankfurt „Hôtel Particulier“ can offer peace and privacy and provide a stylish setting for social occasions, thanks to the high-quality materials used.



## SCHOTTEN & HANSEN in the SOFITEL FRANKFURT OPERA, FRANKFURT/MAIN

### FACTSHEET

<b>Project</b>	Sofitel Frankfurt Opera
<b>Location</b>	Opernplatz 16, 60313 Frankfurt/Main
<b>Completion</b>	2016
<b>Interior Design</b>	Studio MHNA (Marc Hertrich & Nicolas Adnet (F))
<b>Flooring</b>	Schotten & Hansen, Peiting (D); Verlegung durch August Karp Raumgestal- tung GmbH, Frankfurt (D)
<b>Area</b>	ca. 800 m <sup>2</sup> in Lobby, Restaurant, Gänge sowie Tagungs- und Konferenzräume
<b>Photo Credits</b>	Iddor © Christoph Philadelphia; Cover outdoor Sofitel Frankfurt Opera ©Abaca Corporate.Vangelis Paterakis

## The Sofitel Frankfurt Opera

Sofitel Frankfurt Opera is currently one of five German five-star superior hotels of the French hotel chain Sofitel (131 hotels worldwide). The Hotel chain is part of the Accor group, a European market leader with 4,200 hotels in 95 countries, with the French hotel chain following an “exclusive liaison of French elegance, local culture and Gastronomy“. In 2011, Sofitel was awarded the contract for the new building at Frankfurt’s most sought-after hotel location vis à vis the Alte Oper. The opening ceremony took place in 2016 in the presence of the French Minister. The hotel has 150 rooms. The façade is a contemporary translation of the homage to the Alte Oper, the surrounding Gründerzeit buildings and the French Hôtels particuliers. The interior bears the signature of the renowned Paris design studio MHNA Studio Marc Hertrich & Nicolas Adnet.

### For further information, please contact:

Schotten & Hansen GmbH  
kontakt@schotten-hansen.com  
T +49 8861 90 80 40  
August-Moralt-Str. 1-3 | 86971 Peiting  
www.schotten-hansen.com



## The Schotten & Hansen GmbH

Schotten & Hansen’s headquarters are located in Peiting, Upper Bavaria, in the south of Germany. We develop and manufacture work in timber for every conceivable interior application, available in an enormous range of colours. The customer’s wishes are always our first priority. One big reason so many people value our products is the special quality and depth of their surface: unique because it can easily be repaired and revived. Our portfolio includes surface-finished solutions for all kinds of interiors, handcrafted wooden flooring, care products and services.

Schotten & Hansen combine traditional craftsmanship with modern technology to create products for healthy living, exactly tailored to the customer’s wishes. Our products are manufactured with great care and to the highest possible standards.

The special finishing we apply to all our products will last for generations. Our solutions are used in all kinds of places, ranging from private homes and hotels, to public buildings and the yacht-building industry.

Since the company was founded in 1984, we have been driven by a deep respect for nature, a fascination with wood as a material, and a clear commitment to innovation in our striving to produce authentic products.

Today, in close collaboration with an international network of architects, designers, craftsmen and suppliers, our customers’ ambitious projects are successfully being completed all over the world.

**A selection of successfully implemented hotel projects:** 10 Firmdale Hotels in London and New York (for 15 years); 17 Motel One Hotels in Germany, Poland and the Netherlands; Hotel Vier Jahreszeiten Hamburg.